

Modifiers

Protein

DRY FISH | BARRACUDA | RED SNAPPER **13,000**
 STOCK FISH | TURKEY | CROAKER FISH

SNAILS | PRAWNS **16,000**

BEEF | TORSO | DRY MEAT | COW HEAD | COW TAIL
 COW LEG | GOAT MEAT | ASSORTED MEAT
 FRESH FISH - CATFISH | TILAPIA **10,000**

Sides

DODO - **3,000**
 YAM CHIPS - **3,000**
 WHITE RICE - **3,000**

Swallow

EBA | FUFU - **1000**
 STARCH | WHEAT | SEMOVITA - **1,500**
 POUNDED YAM | PLANTAIN FLOUR | ONUNU - **2,000**

NT Specials

NT Banga Soup

PALMNUT PULP, DRY FISH, SHRIMPS, PRAWNS, SNAIL
R - 21,000 | 3.5L B - 59,000 | 4.5L B - 78,000

NT Fisherman Soup

SEAFOOD SOUP WITH FRESH CATFISH
R - 21,000 | 3.5L B - 59,000 | 4.5L B - 78,000

Seafood Okro

OKRO, PRAWNS, SHRIMPS, PERIWINKLE, NGOLO
R - 21,000 | 3.5L B - 59,000 | 4.5L B - 78,000

Palm Oil Rice

RICE IN PALM OIL WITH DRY FISH
R - 12,000 | 1.5L B - 24,000 | 3.5L B - 35,000

PH Bole & Fish

ROAST PLANTAIN AND ROAST FISH SERVED WITH
 SPECIAL PEPPER SAUCE
15,000



Food Codes

R - Regular | **L** - Large | **1.5LB** - 1.5 Litre Bowl (Feeds 2 to 4 persons)
3.5LB - 3.5 Litre Bowl (Feeds 3 to 5 persons) | **4.5LB** - 4.5 Litre Bowl (Feeds 4 to 6 persons)

9ja Specials

Ugba

UGBA, DRY FISH, STOCKFISH, GARDEN EGG
R - 10,000 | 1.5L B - 20,000
3.5L B - 28,000

Nkwobi

SPICY GOAT FOOT / COWLEG OR STOCK FISH
R - 10,000 | 1.5L B - 20,000
3.5L B - 28,000

Isiewu

SPICY GOAT HEAD
10,000



Platters, Salads, Stirfry

Salad

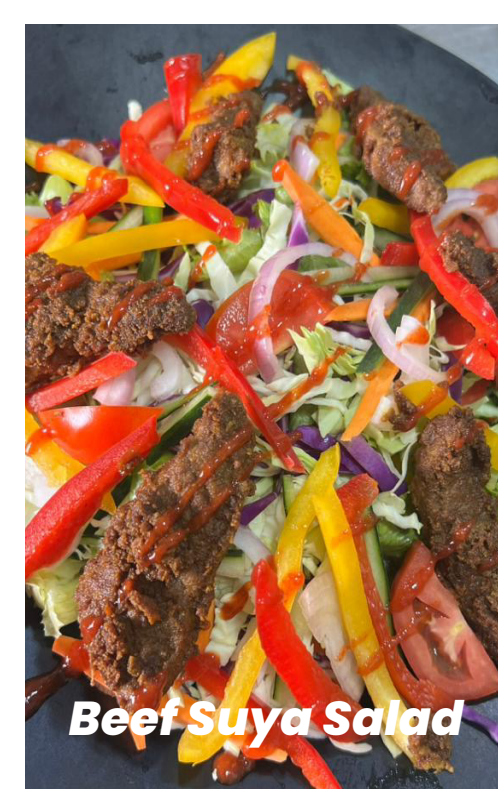
BEEF SUYA SALAD - **12,000**
 CHICKEN SUYA SALAD - **12,000**

Platters

SEAFOOD BOIL
R - 36,000 | 1.5L B - 72,000
 SEAFOOD PLATTER - **60,000**

Stir Fry

PEPPERED SNAILS
R - 13,000 | 1.5L B - 26,000



Authentic Nigerian Flavours